



GROUP PRESENTATION 2024

Together we shape the future

ABOUT US

OVERVIEW

RDM Group is the European leading packaging board producer.

The Group is committed to the development of cartonboard solutions based on recycled fibers.

Our main business area are White-Lined Chipboard (WLC) and Solid Board.

For us, Sustainability is one of the core value on which our business model is built.

ABOUT US



2.300

employees



964

kilotons of cartonboard
(net salable production)



10

mills



2

business areas:
WLC and Solid Board



4

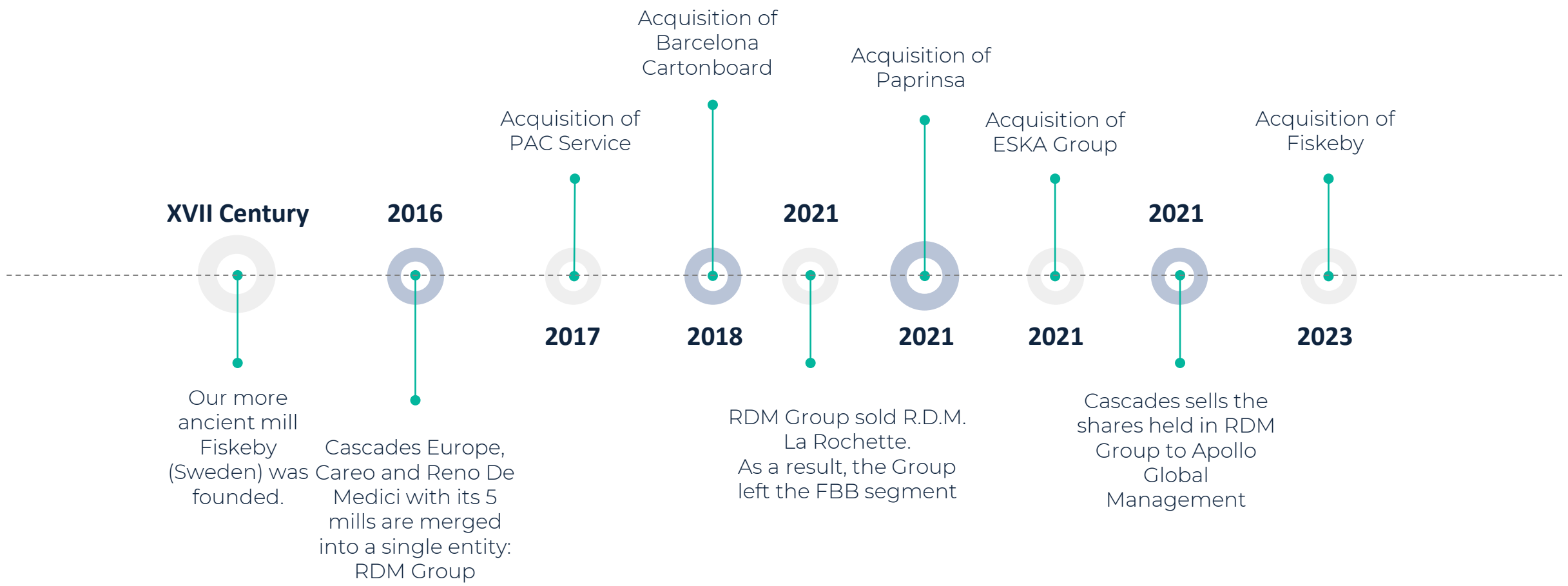
sheeting centers



70

countries
commercial network

OUR HISTORY



OUR VISION

Our Vision is to be
Partner of Choice
through 3
strategic goals:

- Offering superb products and services
- Optimizing costs
- Maximizing Stakeholders satisfaction



OUR VALUES

EMPATHY

The attitude of understanding others and being empathic with them

Empathy

The attitude of understanding others and being empathic with them



OUR VALUES

GROUP-WIDE VISION

The ability to build
a shared Vision
beyond
the individual goals
for yourself and others

Group-Wide Vision

The capacity to build a vision that
leads to the success of the group



OUR VALUES

TOGETHERNESS

The mix between a shared vision and a sense of belongings

Togetherness

The mix between a shared vision and a sense of belongings



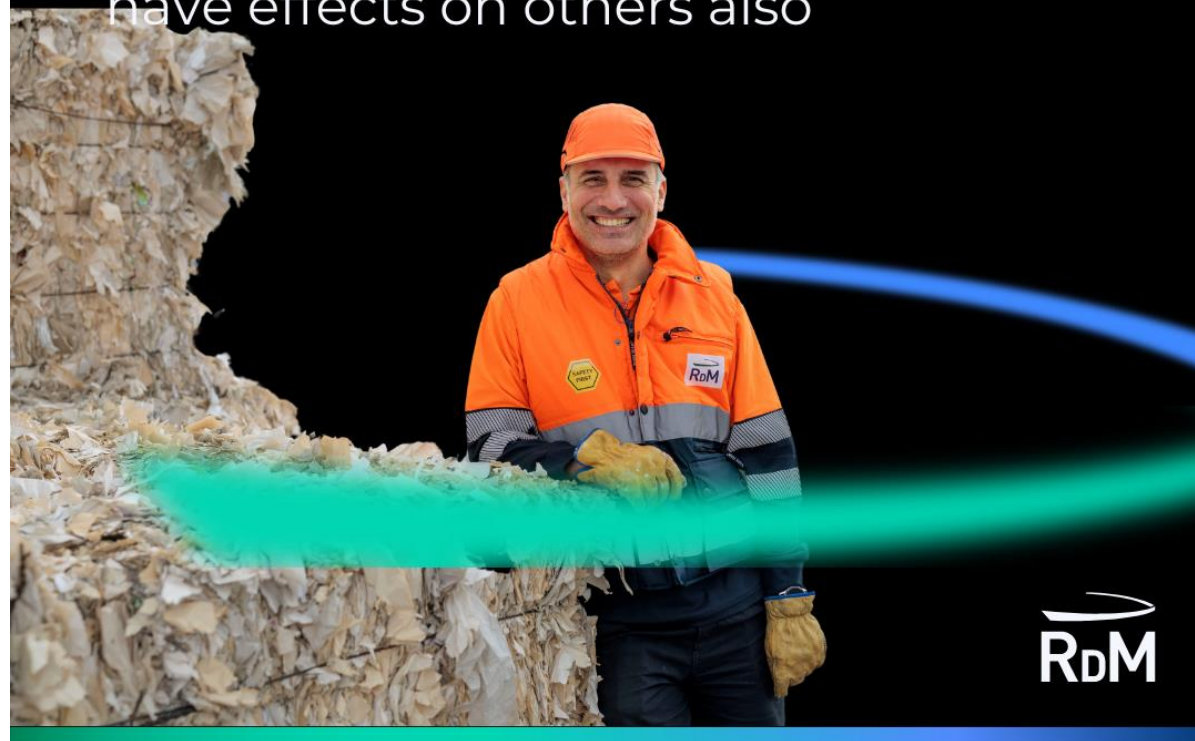
OUR VALUES

RESPONSIBLE DECISION MAKING

The awareness that decisions have effects on others also

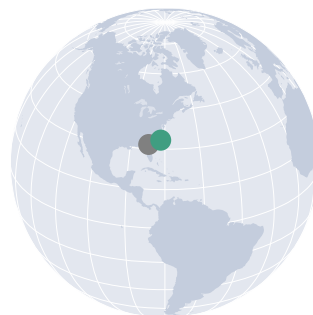
Responsible decision making

The awareness that decisions have effects on others also

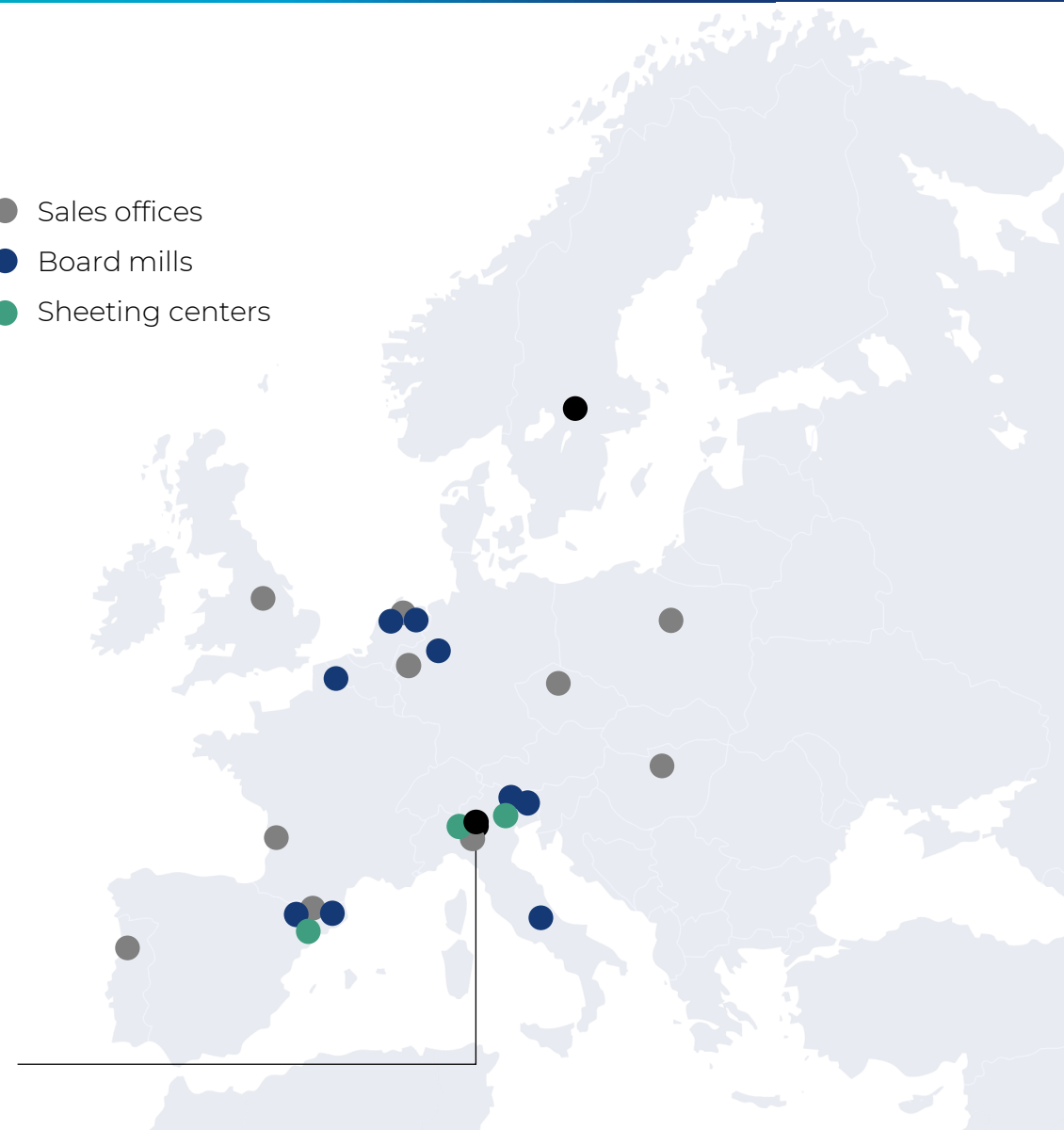


RDM GROUP TODAY

RDM Group has cultivated a robust international network, expanding its reach, tapping into new markets and delivering enhanced services to its customers. This widespread geographical presence has allowed the Group to achieve sustained growth and will continue to contribute to its future development.



- Sales offices
- Board mills
- Sheeting centers



Headquarters

Reno De Medici S.p.A.
Viale Isonzo 25 - 20135 Milan - Italy
Info@rdmgroup.com

OUR MILLS

WLC – WHITE LINED CHIPBOARD

Arnsberg (Germany) WLC (Liner) 220k tons

Barcelona (Spain) WLC (GT/GD, Liner) 200k tons

Paprinisa (Spain) WLC (GT/GD, Liner) 140k tons

Santa Giustina (Italy) WLC (GD/GT/Liner) 250k tons

Villa Santa Lucia (Italy) WLC (Liner) 220k tons

Fiskeby (Sweden) Multiboard 170k tons

SOLID BOARD

Hoogezand (Netherlands) Solid Board 170k tons

Ovaro (Italy) Solid Board 110k tons

Sappemeer (Netherlands) Solid Board 120k tons



OUR SHEETING CENTRES

ESKA board Ibérica Sau

(Barcelona – Spain)

Eska USA b.v.

(Suffolk – USA)

PAC Service

(Padua – Italy)

R.D.M. Magenta S.R.L.

(Carbagnate – Italy)



OUR STRONG POINTS

RDM Group leverages on five clear strengths to deliver strategy:



MULTI-COUNTRY

The Pan European asset base and sales network ensure widespread coverage and worldwide sales



BROAD OFFER

Cartonboard portfolio based on recycled fibers and specialties, meeting customer needs



SIZE

Leading position on the European market making RDM Group the Partner of Choice for customers and brand-owners



GROWING BUSINESS

Presence in the packaging business, sector in which returns on investment prove to be high.



SUSTAINABILITY

RDM Group cartonboard is fully recyclable and is designed to be returned to the virtuous circle of the circular economy

PRODUCTS & INNOVATION



OUR BUSINESS AREA

WLC – WHITE LINED CHIPBOARD

Coated cartonboard for packaging made of recycled fibers. RDM Group is the leading producer in the recycled cartonboard business and the largest producer in Italy, France, the Netherlands and in the Iberian Peninsula. We recently added the Fiskeby mill to the family which brings with the Multiboard, a high-performance product that enlarges our offer and will allow to address new markets.



SOLID BOARD

Cartonboard in high grammages well suited for specialty products, luxury packaging and the publishing market. Solid board is representing a leading segment worldwide including the US and Asia



INNOVATING THE WAY WE OPERATE

We innovate the way we operate through:



IBP (INTEGRATED BUSINESS PLANNING)

Integrate and align the supply and demand planning.



ASSET OPTIMIZATION

Optimize plant and production mix; customize capex plan.



SERVICE IMPROVEMENTS

Reduce delivery lead times and offer bespoke production runs.



TRANSFORMATION

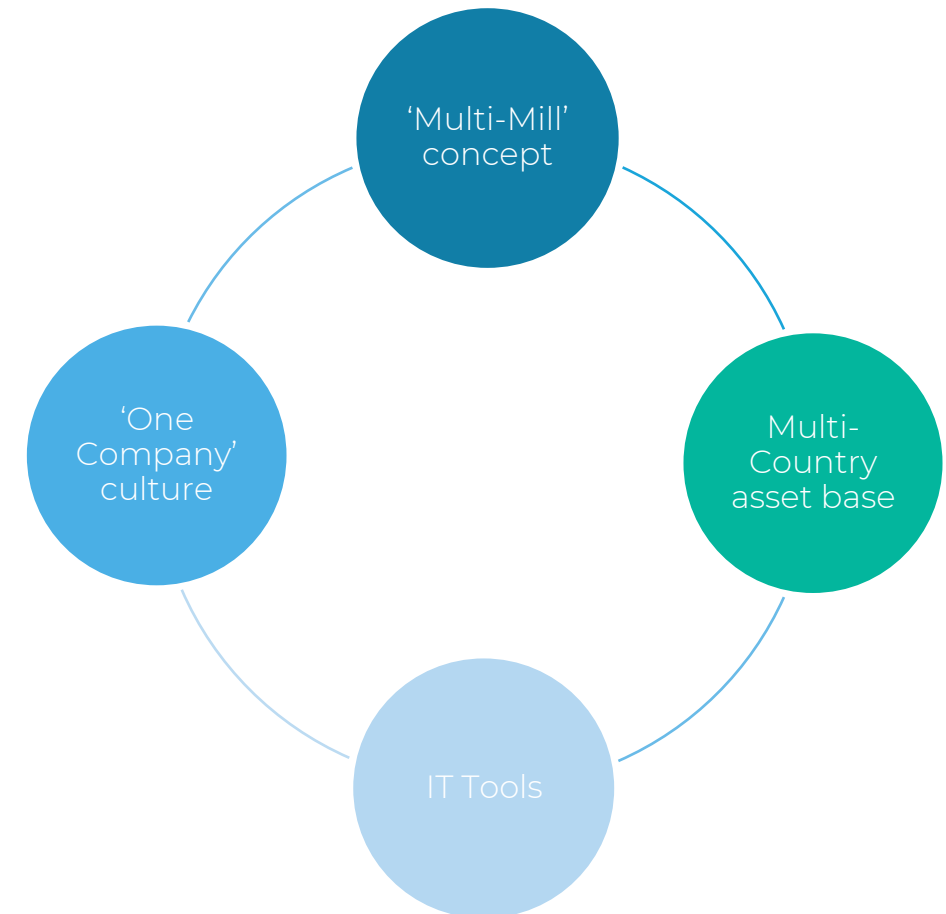
Launch a portfolio of value-added initiatives to support the strategic goals as a One Company.

'MULTI-MILL' CONCEPT

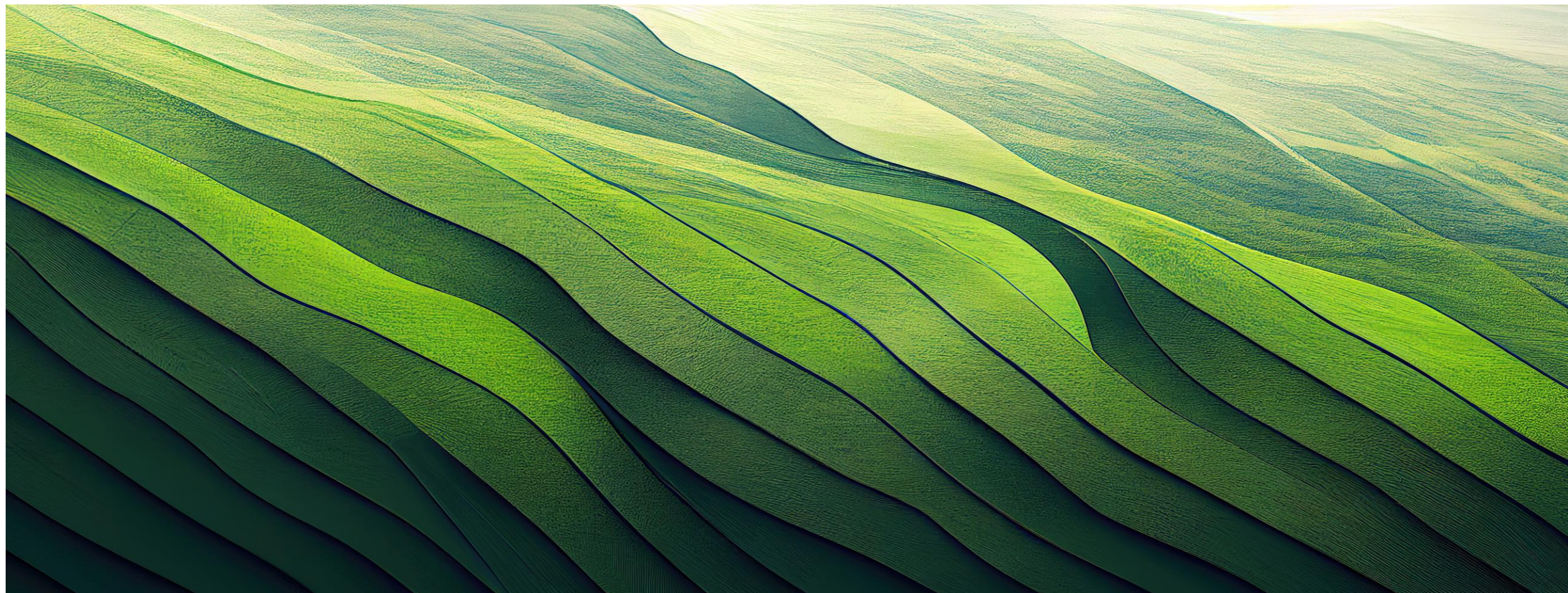
The “Multi-Mill Concept” is based on the principle by which it is possible to produce products in multiple mills, so as to ensure that supplies are available for our customers independently from the production site, in a flexible and punctual manner.

BENEFITS

- Flexibility in operations
- Timeliness in delivery
- Greater proximity to customers and security of supply
- Volatility mitigation that may arise from changes in demand across markets and tons produced across assets



SUSTAINABILITY

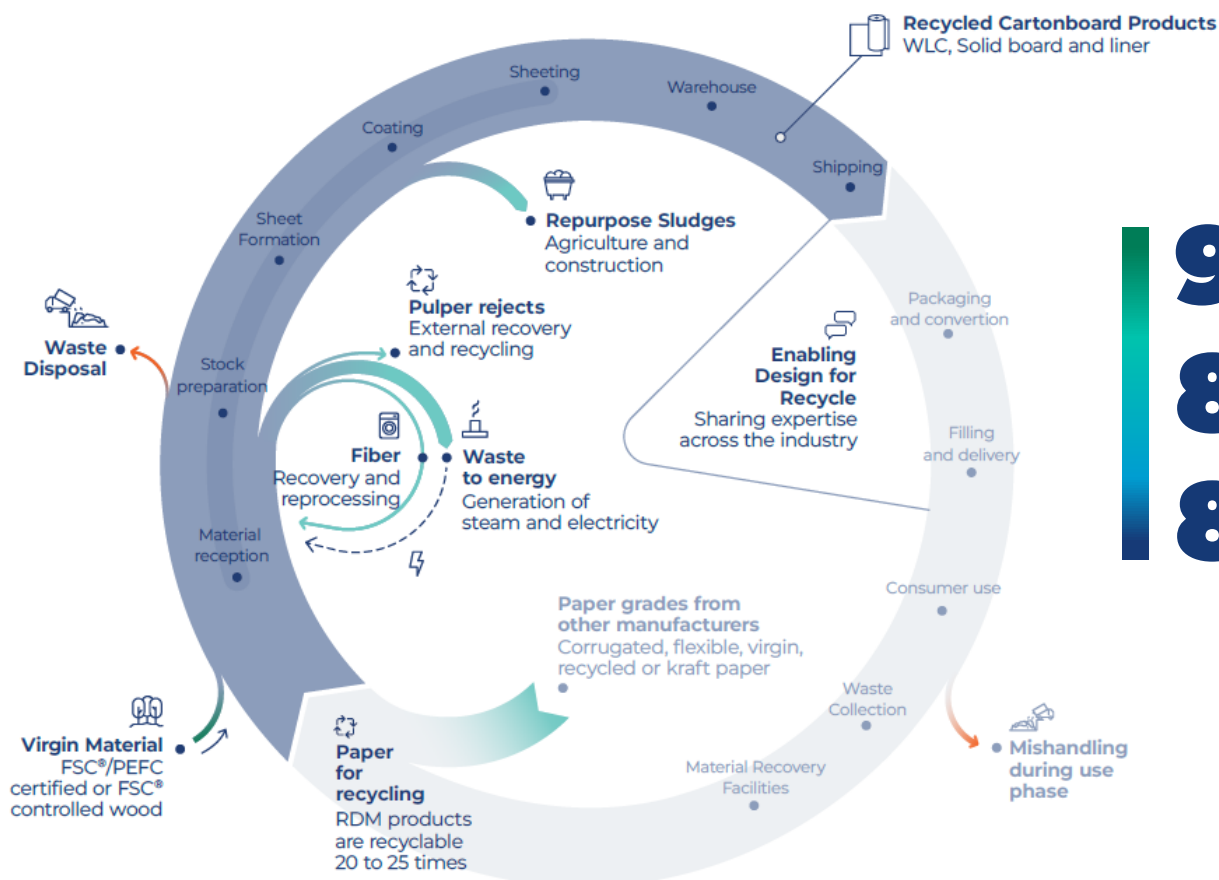


OUR CIRCULAR BUSINESS MODEL

RDM Group's business model is built on the principles of the circular economy, based on regenerative resources and circulating materials.

RDM Group's products are designed to be:

**RENEWABLE,
RECYCLABLE,
RECYCLED**



95%

of the fiber-based raw materials come from paper for recycling.

85%

of all materials used come from renewable sources.

83%

of our waste is sent for recovery feeding also circular economy

PREFERRED MATERIAL FOR CIRCULARITY

RDM Group leverages on 3 clear strengths to deliver strategy:



High Resilience of Paper Fibers

According to research by Graz University of Technology, the fibers that make up cartonboard can be recycled **more than 25 times.**



82%

Recycling Rate

Consumers trust an efficient collection and recycling system. Paper and board is the most recycled packaging material in the EU – 82.5% (Eurostat 2021). EU target to further increase to **85% by 2030.**



Leadership in Circularity

From the forest to cartonboard, to the folding carton, to the retailer, to the consumer and back to **recycling in the carton value chain.**

OUR CONTRIBUTION TO THE SDG's



SDG #3: PROMOTE OCCUPATIONAL HEALTH AND SAFETY

How we contribute: 5 mills have implemented the Behavior-Based Safety program as part of our long-term sustainability goals.



SDG #4: PROMOTE LEARNING AND SKILLS DEVELOPMENT

How we contribute: more than €890,000 invested in 2023 in technical and vocational training and skills development.



SDG #5: PROMOTE GENDER EQUALITY

How we contribute: percentage of women in the Company of 11.4% (2023) with an increase of 20% compared to 2020 (9.5%) .



SDG #6: PROTECT WATER ECOSYSTEMS

How we contribute: 22% reduction in wastewater discharge intensity in 2023 since 2020.



SDG #7: INCREASE ENERGY EFFICIENCY OF OPERATIONS

How we contribute: 7% reduction in energy intensity in 2023 since 2020.



SDG #8: PROMOTE FULL EMPLOYMENT AND DECENT WORK

How we contribute: wherever possible, the Group adopts national collective bargaining agreements that guarantee good working conditions (93.6 % of all employees)



SDG #9: MODERNIZING INDUSTRIAL PROCESSES AND MAKING THEM MORE SUSTAINABLE

How we contribute: 5 mills have successfully launched the Operational Excellence Manufacturing program to modernize industrial processes



SDG #12: ADOPT SUSTAINABLE PATTERNS OF PRODUCTION AND CONSUMPTION

How we contribute: 95% of our fiber-based raw materials is made from paper for recycling.



SDG #13: TAKE ACTION TO COMBAT CLIMATE CHANGE AND ITS IMPACTS

How we contribute: completed a new CHP plant at Ovaro in 2022 and Barcelona in 2024.



SDG #15: PROMOTE SUSTAINABLE MANAGEMENT OF FOREST-RELATED RESOURCES

How we contribute: 100% of virgin market pulp used in our production is purchased from certified and/or controlled sources



SDG #17: STRENGTHEN PARTNERSHIPS FOR SUSTAINABLE DEVELOPMENT

How we contribute: RDM is a member of more than 30 local and international associations that support innovation and for sustainable development.

2020-2030 SUSTAINABILITY PLAN

Goal	Baseline 2020	Progress 2023		Target	Status
Reduce Scope 1 and Scope 2 CO ₂ equivalent emissions per ton of net salable production*	0.495 tCO ₂ e/t	0.500 tCO ₂ e/t	+1%	-30% by 2030	●
Reduce wastewater discharge per ton of net salable production*	11.06 m ³ /t	9.39 m ³ /t	-15%	-20% by 2030	●
Increase the proportion of waste sent for recovery*	73%	83%	+14%	90% by 2030	●
Reduce the total amount of waste generated per ton of net scalable production	181 kg/t	202 kg/t	+11%	-20% by 2030	●
Key suppliers assessed and qualified according to ESG criteria for all relevant product categories	New assessment to be started	Project set-up phase started	-	100% by 25	●
Implement a behavior-based safety program at all mills	1 site	5 sites	50%	All mills by 2025	●
Increase the employee advocacy rate	3.98	4.03	10%	4.5 by 2030	●
Increase the percentage of women employed by RDM Group	9.5%	11.4%	+20%	+30% by 2030	●

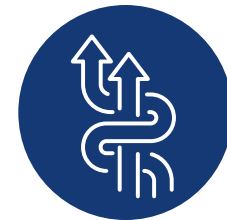
2020-2030 SUSTAINABILITY PLAN GOALS



Reduce scope 1 and scope 2 CO₂ equivalent emissions per ton of net salable production*



Reduce wastewater discharge per ton of net salable production*



Increase the proportion of waste sent for recovery*

Sustainability has always been at the center of RDM Group's responsible action. We developed a Sustainability long-term plan 2020–2030 to address the main areas of impact. In 2021, RDM Group issued a Sustainability-Linked Bond that ties its yield to the achievement of three sustainability targets by 2025. Sustainability and Finance are strongly linked at RDM Group.

Learn **more.**



CERTIFICATIONS

With indication of the year of first achievement.

LOCATIONS	ISO 45001	ISO 9001	ISO 14001	EMAS	BLAUER ENGEL	ISO 50001	FSC®	PEFC	BRC / EN 15593 / ISO 22000
Arnsberg	-	1992	1997	1997	-	-	2010	-	-
Barcelona	2021	1996	1998	2000	-	2020	2015	-	2010
Blendecques	-	1995	-	-	-	2014	2008	-	-
Magenta	2023	1996	-	-	-	-	2010	-	-
Milan (HQ)	2019	1996	2021	-	-	2021	2023	-	-
Hoogezand	2023	1997	2014	-	-	2020	2008	2012	-
Ovaro	2020	1996	2004	-	2015	2015	2009	2017	-
PAC Service	2021	1997		-	-	-	2010	2009	2018
Paprinza	2023	2022	-	-	-	-	2012	-	-
Santa Giustina	2020	1996	2001	-	-	2015	2010	2016	2020
Sappemeer	2023	1997	2014	-	-	2020	2008	2012	-
Villa Santa Lucia	2020	1996	2005	-	-	2015	2010	-	-

ECOVADIS GOLD RATING



SUSTAINABILITY RATING

RDM Group has been awarded the Gold EcoVadis Medal by EcoVadis, a trusted provider of business sustainability ratings. It is an important recognition proving the Group's commitment to responsible and sustainable business practices

This achievement places RDM Group among the top 5% of companies evaluated by EcoVadis.



Together we shape the future

For more information,
please contact:

NAME/ADDRESS/CONTACT INFO